

GARMIN®

SPY™ POLE GUNNEL MOUNT

Installation Instructions

Important Safety Information

WARNING

See the *Important Safety and Product Information* guide in the product box for product warnings and other important information.

Failure to install this device according to these instructions could result in personal injury, damage to the vessel or device, or poor product performance.

CAUTION

For the best possible performance and to avoid potential injury, damage to the device, or damage to your vessel, installation by a qualified marine installer is recommended.

To avoid possible personal injury, always wear safety goggles, ear protection, and a dust mask when drilling, cutting, or sanding.

NOTICE

When drilling or cutting, always check what is on the opposite side of the surface to avoid damaging the vessel.

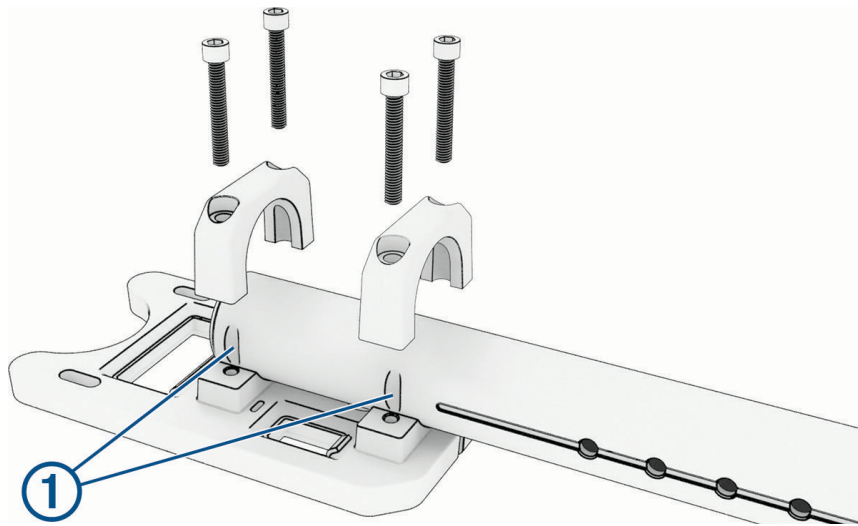
Tools Needed

- Drill and drill bits:
 - 1¹/₃₂ in. (9 mm) bit to drill the pass-through holes for the mounting bolts.
 - 3 in. (77 mm) hole saw to drill the recess hole for the mount base (not required if you do not plan to flush-mount the mount base).
- Wrenches, bits, and sockets:
 - 1¹/₄ in. hex wrench or socket
 - 3³/₈ in. (10 mm) wrench or socket
 - 1¹/₂ in. (13 mm) wrench or socket.

Assembling the Horizontal Tube

The horizontal tube assembly includes the Spy pole bracket. This bracket is used to connect the Spy pole to the gunnel mount.

- 1 Identify the Spy pole bracket, bracket clamps, horizontal tube, and clamp screws.
- 2 Set the Spy pole bracket on a flat surface with the flat side facing down.
- 3 Place the horizontal tube into the indentation in the Spy pole bracket, aligning the screw holes with the indentations in the horizontal tube ①.



- 4 Rotate the horizontal tube so that no grooves are facing upwards.
- 5 Place the clamps over the horizontal tube.
- 6 Insert the hex screws through the clamps and into the Spy pole bracket, and using the included 5 mm hex wrench or bit, fasten the clamps to the Spy pole bracket, but don't fully tighten them yet.
- 7 Flip over the assembly and make sure that the top groove in the horizontal tube is aligned with the vertical notch in the Spy pole bracket.
- 8 Fully tighten the screws.

Shortening the Tubes

You can shorten either or both the horizontal and vertical tubes of the gunnel mount if you want the assembly to take up less room on the vessel. This is an optional procedure.

⚠ WARNING

When shortening the tubes, you must use a cutting tool designed for cutting metal, and you must secure the tubes using a clamp or other fixture designed for securely holding metal pieces while cutting. You must always wear safety goggles, ear protection, a dust mask, and any other clothing appropriate for cutting metal. Failure to use the correct tool or fixture, or not wearing the appropriate protective clothing when cutting metal can result in severe injury and possibly death.

- 1 Carefully measure the installation location to determine how short you can cut each tube.
- 2 Mark a cut line on the appropriate end of each tube you intend to cut.

NOTICE

You should cut the vertical tube from the top end and the horizontal tube from the back end, opposite from the Spy pole mount. Cutting the incorrect end may cause issues when assembling the tubes.

You must leave a set of screw holes on the end of each tube so you can install the safety stop bolts on the end of each pole ([Attaching Safety Stop Bolts, page 3](#)). Removing all of the screw holes at the end of the tube prevents you from installing the safety stop bolts and may result in damage to the device, the vessel, or both.

- 3 Using an appropriate cutting tool, cut the tube to the measured length.
- 4 Deburr and sand the cut tubes to remove all sharp, rough edges.

⚠ CAUTION

Failure to properly deburr and remove sharp edges from the cut tubes can result in personal injury.

Connecting the Horizontal and Vertical Tubes

The tube-connector bracket connects the horizontal tube assembly and the vertical tube.

- 1 Locate the vertical tube and hold it upright, with the two locking pins at the bottom.
- 2 Locate the tube-connector bracket and orient it so the Garmin® logo is facing up.

- 3 Push and twist the vertical tube up through the vertical hole in the bottom of the tube-connector bracket with the rubber grommet.
- 4 Slide the horizontal tube assembly through the horizontal hole in the tube connector with the rubber grommet.

Orient the horizontal tube assembly so that the flat side of the Spy pole bracket is facing upwards.

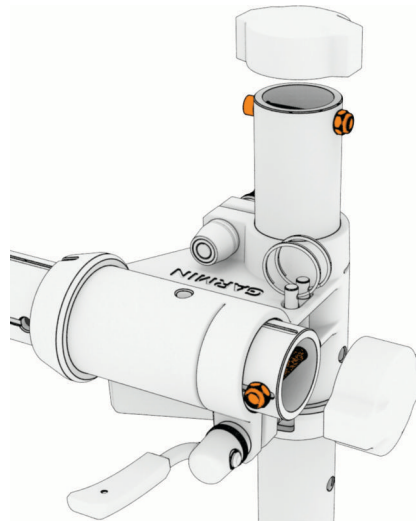
Attaching Safety Stop Bolts

After connecting the vertical and horizontal tubes to the tube-connector bracket, you must attach safety stop bolts to each tube to prevent them from sliding out of the tube-connector bracket.

NOTICE

Failing to install the safety stop bolts can lead to damage to the Spy pole, gunnel mount, and your vessel.

- 1 Locate the two stop bolts and nuts.

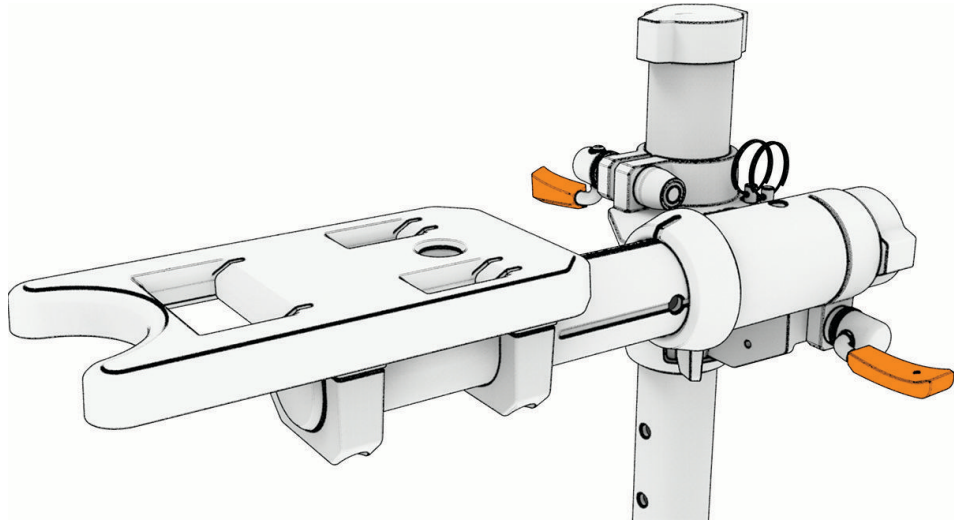


- 2 Feed one bolt through the two holes at the very top of the vertical tube, and place a nut on the end.
- 3 Using the included 5 mm hex wrench and a 10 mm socket or wrench (not included), tighten the nut on the bolt.
- 4 Feed the other bolt through the two holes at the back end of the horizontal tube, on the opposite side of the Spy pole bracket.
- 5 Using the included 5 mm hex wrench and a 10 mm wrench or socket (not included), tighten the nut on the bolt.
- 6 Locate the rubber end caps.
- 7 Place the caps over the end of each tube.
- 8 Firmly press down on the edges of each cap and lightly tap with a wrench or screwdriver to fully seat each cap onto the tubes and cover the safety stop bolts.

Installing Quick-Release Levers

Each tube on the Spy pole gunnel mount includes a quick-release lever that allows you to easily adjust the position of the mount without using tools.

- 1 Locate the quick-release levers, the washers, and the end caps.
- 2 On the tube connector, identify the installation hole beneath the horizontal tube.



- 3 Slide the lever through one washer and into the hole in the tube connector. Orient the washers so that the flat sides are facing the tube connector.
 - 4 Place the other washer and the end cap on the other side of the lever and screw on the end cap.
 - 5 Tighten the cap to hold the lever in place.
 - 6 Repeat these steps for the vertical tube.
- You can latch the levers to hold the tubes in place, and unlatch them to adjust them as needed.

Installing the Gunnel Mount Base

After assembling the gunnel mount, you must install the base on the deck in an appropriate location.

- 1 Refer to the mounting considerations topic to decide where to install the base ([Mounting Considerations, page 4](#)).
- 2 If you want to install the base so that it is flush with the deck when the gunnel mount is removed, follow the flush-mounting instructions ([Flush-Mounting the Spy Pole Gunnel Mount, page 4](#)).
- 3 If you prefer to install the base and avoid drilling a 3 in. recess hole in the deck, follow the above-deck mounting instructions ([Deck Mounting the Spy Pole Gunnel Mount, page 5](#)).

Mounting Considerations

The base of the Spy pole gunnel mount can be installed in either a flush-mounted or deck-mounted configuration. When selecting a mounting location observe these considerations.

- To install the gunnel mount, you must have access to the underside of the mounting surface to install the mounting bolts.
- Choose a flat mounting location that allows the mounting bracket to extend over the gunnel enough so the Spy pole does not contact the side of the vessel.
- If you flush-mount the base, you must drill a 3 inch hole into the mounting surface as well as the four $11/32$ bolt holes. A deck-mounted base requires only the four bolt holes.
- Deck-mounting the base will leave a protrusion on the deck if you detach the mount from the base.

Flush-Mounting the Spy Pole Gunnel Mount

The Spy pole gunnel mount base is configured at the factory to be installed in a manner where it is flush with the surface of the deck when the Spy pole is removed from the base.

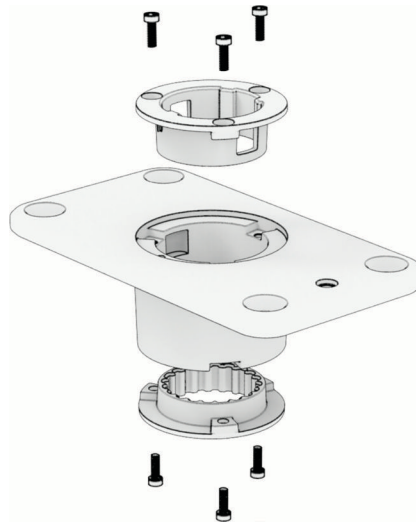
- 1 Place the included template at the location where you plan to install the mount base.
- 2 Mark the location in the center of the large hole for the recessed pole support.
- 3 Using a 3 in. hole saw, cut the large center hole.
- 4 Place the mount base on the surface so the protrusion fits snugly into it and the mount base is flush against the surface.
- 5 If necessary, refine the edges of the hole until the base fits as expected.
- 6 With the base set into the hole, mark the pass-through holes for the bolts in the four corners.

- 7 Remove the base.
- 8 Using a $1\frac{1}{32}$ bit, drill the four pass-through holes.
- 9 Place the base back into the hole, align the holes on the base with the pass-through holes, and feed each included bolt through each hole.
- 10 On the other side of the surface, place an included washer and nut onto the end of each bolt.
- 11 Using a $\frac{1}{4}$ in. hex wrench (not included) and a $\frac{1}{2}$ in. (13 mm) wrench or socket (not included), tighten the nut on each bolt until the base is flush and secure against the deck.
- 12 Locate the weather cap.
- 13 Press the nub at the end of the short tether into the hole on the side of the base to secure the cover to the base.
If you remove the gunnel mount from the base, you can cover the hole to prevent debris or moisture from getting inside the boat.
- 14 Snip off the other end of the weather cap tether with a pair of scissors.

Deck Mounting the Spy Pole Gunnel Mount

Although the Spy pole gunnel mount base is configured at the factory to be installed in a manner where it is flush with the surface of the deck when the Spy pole is removed from the base, you can configure the base so that only the four bolts feed through the surface and the pole-support is not recessed into the surface. This method eliminates the need to cut a $2\frac{3}{4}$ in. (70 mm) hole in the center of the mount base and minimizes the number of holes in the deck.

- 1 Using the included 3 mm hex wrench, remove the six screws that secure the bushings on both sides of the base.



- 2 Swap the bushings so that the top bushing is on the bottom and the bottom bushing is now on the top of the bracket.
- 3 Install the screws you removed in the first step, and use the included 3 mm hex wrench to tighten them.
- 4 Place the base flat on the deck at the location where you plan to install it, and mark the pass-through holes for the bolts in the four corners.
- 5 Remove the base.
- 6 Using a $1\frac{1}{32}$ bit, drill the four pass-through holes.
- 7 Place the base back on the surface, align the holes on the base with the pass-through holes, and feed each included bolt through each hole.
- 8 On the other side of the surface, place an included washer and nut onto the end of each bolt.
- 9 Using a $\frac{1}{4}$ in. hex wrench (not included) and a $\frac{1}{2}$ in. (13 mm) wrench or socket (not included), tighten the nut on each bolt until the base is secure against the deck.
- 10 Locate the weather cap.
- 11 Press the nub at the end of the long tether into the hole on the side of the base to secure the cover to the base.

If you remove the gunnel mount from the base, you can cover the hole to prevent debris or moisture from getting inside the mount or the boat.

Inserting the Gunnel Mount into the Base

- 1 Align the notches on the bottom of the vertical tube with the hole in the base.

The vertical tube will only slide into the base in this orientation.

- 2 Press the tube down into the base until the two clips lock into place.

To remove the gunnel mount from the base, press in on the two pins at the bottom of the vertical tube and pull the assembly out of the base.

Adjusting the Gunnel Mount Position

After installing the gunnel mount in the base, you can easily adjust its position using the quick-release levers and pins. You can use the two quick-release levers to easily adjust the position of the mount. There are also two security pins that you can use to lock the mount at a set height or lock the Spy pole out of the water (*Installing the Security Pins*, page 6).

NOTICE

You must use the quick-release levers to secure the tubes when in use. Failure to use the quick-release levers can result in damage to the gunnel mount, Spy pole, and your vessel.

- 1 If necessary, remove the security pin from the vertical tube.
- 2 Unlatch the quick-release lever securing the vertical tube.
- 3 Adjust the gunnel mount to the preferred height and angle.
- 4 Re-latch the quick-release lever.
- 5 Unlatch the quick-release lever securing the horizontal tube.
- 6 Slide the gunnel mount as needed so that it extends an appropriate distance over the gunnel of the vessel.
- 7 Re-latch the quick-release lever.

Attaching the Spy Pole to the Gunnel Mount

After you have assembled the Spy pole gunnel mount, you can attach the Spy pole.

- 1 Line up the front tooth on the bottom of the Spy pole housing with the larger hole in the bracket.
- 2 Press the Spy pole into the bracket until you hear a click.
- 3 Make sure that the Spy pole latch pin is fully seated with no bare metal visible under the pull cap.

The Spy pole is securely connected to the Spy pole gunnel mount.

Installing the Security Pins

The gunnel mount includes two silver security pins that can be stored in the tube-connector bracket when not in use. These pins can be used to lock the gunnel mount at a certain height or lock the Spy pole out of the water. These pins provide additional security when traveling in turbulent water.

NOTICE

You must use the security pins when trailering or moving through turbulent water with the Spy installed. Failure to use the security pins can result in damage to the Spy pole, gunnel mount, or your vessel.

- 1 Unlatch the vertical quick-release lever and move the mount to the preferred height.
Make sure to align the hole in the tube-connector bracket with one of the holes in the vertical tube.
- 2 Relatch the quick-release lever.
- 3 Pull one of the security pins out of the tube-connector bracket and push it through the holes until it sticks out the other side of the vertical tube.
The gunnel mount kit includes a lanyard for you to tie the security pins to the tube-connector bracket so they don't get misplaced.
- 4 Unlatch the horizontal quick-release lever and rotate the mount 90 degrees until the hole in the horizontal tube lines up with the hole in the tube-connector bracket.
The Spy pole should now be out of the water and parallel with the surface.
- 5 Relatch the quick-release lever.

- 6 Pull the other security pin out of the tube-connector bracket and push it through the holes until it sticks out the other side of the horizontal tube.

© 2026 Garmin Ltd. or its subsidiaries

Garmin® and the Garmin logo are trademarks of Garmin Ltd. or its subsidiaries, registered in the USA and other countries.

Spy™ is a trademark of Garmin Ltd. or its subsidiaries. These trademarks may not be used without the express permission of Garmin.