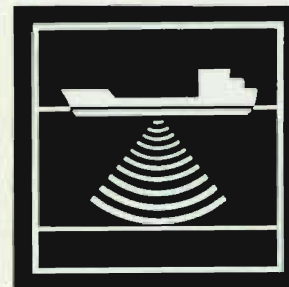


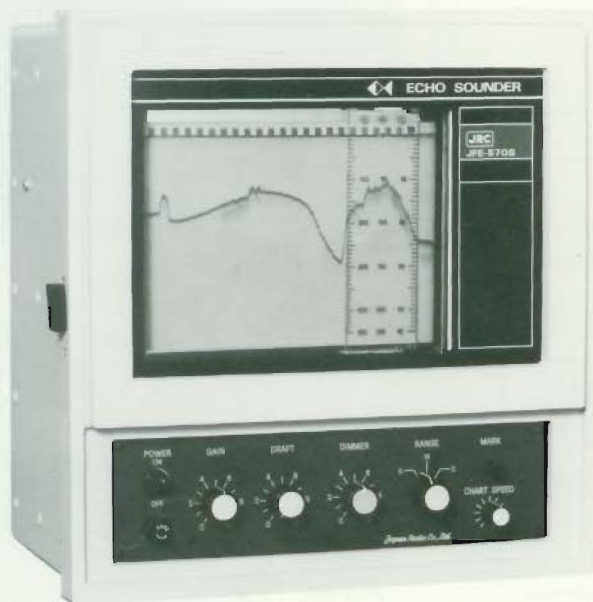
JRC

NAVIGATIONAL ECHO SOUNDER



JFE-570S (200kHz) / 570SD (50kHz)

CATALOGUE No. Y10-82



JFE-570S

SPECIFICATIONS

• LOW-NOISE RECORDING

The JFE-570S/SD is a high-performance echo sounder and operates on a transmitting frequency of 200kHz or 50kHz, ensuring minimized influence of noise generated in sailing and of bubbles produced in rudder angle change.

• HIGH RESOLUTION

The equipment is provided with a function to adjust the sounding pulse length to each depth range, a built-in STC (sensitivity time control) circuit to eliminate noise echoes from bubbles, plankton and floats near the surface water, and a transmitting power reduction control; these functions ensure high resolution in depth sounding in the shallow water.

• ACCURATE AND STABLE SOUNDING

Range control by a high-precision ceramic oscillator and recording pen drive by an electronically-controlled DC motor ensure accurate and stable sounding with no effect of power supply voltage and frequency variations.

• WIDE RECORDING PAPER

The 150 mm-wide recording paper provides easy-to-see pictures. The paper feed speed is continuously adjustable from 5 to 25mm per minute.

Depth range	Shallow	Medium	Deep
	0 - 45 m	0 - 225 m	0 - 450 m
Sounding depth	2 m - 450 m below transducer's bottom under normal propagation conditions.		
Scale graduation	2.89 mm/m	0.58 mm/m	0.29 mm/m
Sounding rate	133 ppm	133 ppm	66 ppm
Paper feed speed	5 - 25 mm/min; continuously adjustable		
Operating frequency	200kHz (JFE-570S)		50kHz (JFE-570SD)
Output power	Output level (0 dB :1μpa)	205 dB or more	195dB or more
Receiver	Superheterodyne :	135 dB ± 3 dB	
	Intermediate frequency :	15 kHz	
	Frequency bandwidth :	5.5 kHz - 9 kHz	3.5 kHz
Transducer	Element :	Barium-titanate 80φ	Barium-titanate 60φ
	Beam angle :	5° (-3 dB total angle)	36° (-3dB total angle)
	Directional gain :	30,5 dB	16dB
	Type :	Rubber-molded with 20 m cable	
Recording paper	Dry type 150 mm(W) x 15 m(L)		
Draft control	30 m or more		
Illumination	Over recorder front and operating panel with dimmer control		
Safety distance from magnetic compass	1.5 m from standard compass 1.2 m from steering compass		
Power supply	100/110/115/220V AC 50/60 Hz 60VA		
Installation method	Bulkhead-mount type or bulkhead-flush type		
Dimensions & Weight	Bulkhead-mount type : W360 x H380 x D210 mm		16 kg
	Bulkhead-flush type : W440 x H430 x D210 mm		17 kg



JFE-570S/570SD

International Regulations

IMO Recommendations

JFE-570S

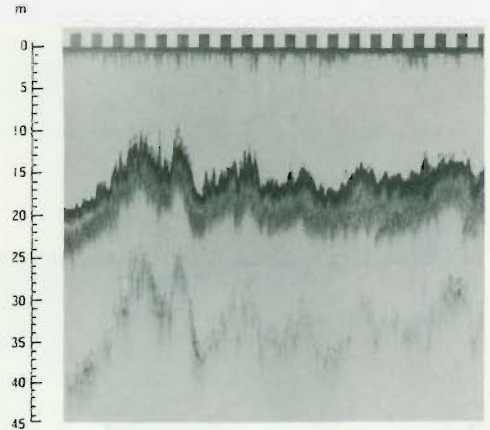
- Japan Ministry of Transport.
- Norwegian Maritime Directorate/NSC.
- Register of Shipping of the People's Republic of China (ZC).

JFE-570SD

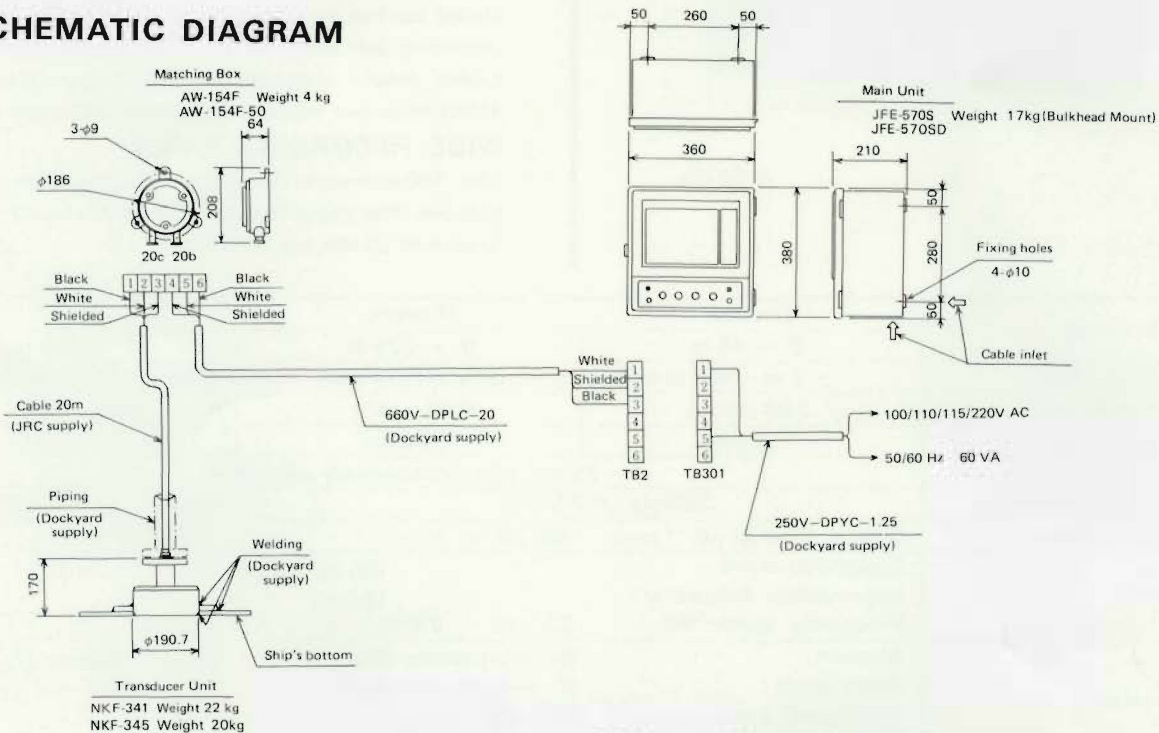
- U.K. Department of Transport (DOT).

COMPOSITION

Component	Model	Quantity	Remarks
Main unit	JFE-570S JFE-570SD	1	
Transducer unit	NKF-341 NKF-345	1	With 20 m cable
Matching box	AW-154F AW-154F-50	1	
Instruction manual		1 copy	English
Spare parts		1 set	Standard



SCHEMATIC DIAGRAM



For further information, contact:

JRC *Japan Radio Co., Ltd.*
Since 1915

Main Office: Akasaka Twin Tower (Main),
17-22, Akasaka 2-chome,
Minato-ku, Tokyo 107, JAPAN
Telephone: Tokyo (03) 3584-8789, 8836
Facsimile: Tokyo (03) 3584-8795, 8878
Telex: 2425420 JRCTOK J
Cable: JAPANRADIO TOKYO

Overseas Branches: London, New York
Liaison Offices: Jakarta, Bangkok, Manila, New Delhi,
Hudson, Rio de Janeiro, Harlow,
Rotterdam, Las Palmas

10EM