



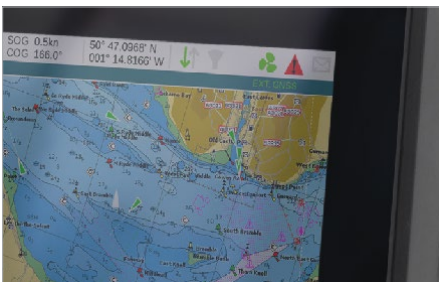
SAS-900 Class A AIS

SAS-900 is the world's most sophisticated and robust SOLAS and Inland-Waterway certified AIS Class A Transceiver.

Fourth generation AIS technology delivers unmatched real world AIS receive, transmit and message processing performance and reliability. Quality engineered and manufactured without compromise, with features such as IPx7 weatherproofing and integrated shock & vibration protection for continuous long-term operation in even the harshest commercial or military environment.

A large integrated high definition color screen maximizes the benefit of the SAS-900's powerful Electronic Chart display engine with full detailed chart AIS overlay, and multiple target management functionality, including innovative MOB features and many more.

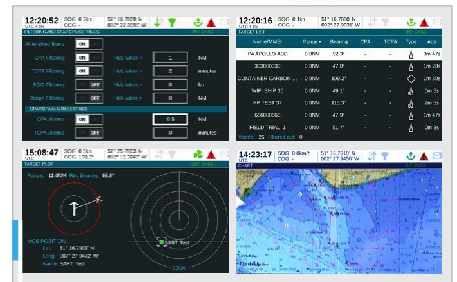
- Internationally certified SOLAS, MED, FCC, Inland Waterway, Industry Canada
- IPx6 & IPx7 water and weatherproof
- Inter-operable with all other bridge systems
- Uses Optional High performance C-MAP Max Electronic Chart
- Multi-lingual, intuitive user interface
- MOB & SART alert and tracking
- Integrated Wi-Fi
- Fully integrated device system
- Pilot plug interface
- NMEA0183 & 2000
- 2 Year Parts Warranty



Full color display with day and night modes. Integrated CMAP compliant chart engine.



Shock, vibration, water and weatherproof (Certified IPx6 & IPx7).



Intuitive, easy to use multi-lingual menu system with an extensive range of features & functionality.

SI-TEX Marine Electronics

25 Enterprise Zone Drive, Ste #2

Riverhead, NY 11901

Tel: 631-996-2690 Fax: 631-996-2693

Email: customerservice@si-tex.com

Physical Specification

Dimensions	152mm x 165mm x 111mm
Weight	1.5kg

Electrical Specification

Power supply	12 to 24VDC
Power consumption	< 12W

Connectors

VHF antenna connector	SO-239 / UHF
GNSS antenna connector	TNC
Power	Two pin connector (cable provided)
Serial interfaces and alarm relay	18 pin connector (cable provided)
Serial inputs	14 pin connector (cable provided)
NMEA2000®	NMEA 2000 Micro connector

Data Interfaces

NMEA0183 (IEC61162-2) bi-directional ports	3
NMEA0183 (IEC61162-1) sensor inputs	3
DGPS correction data input (ITU-R M.823-2)	1
Alarm relay output	1
NMEA2000	1
WiFi	802.11 b/g/n
Pilot port	1 (optional)

Standards Compliance

AIS standard	IEC 61993-2 Ed 2.0 ITU-R M.1371-5 CCNR VTT Ed 2.0
Serial data interfaces standards	IEC 61162-1 Ed 4.0 IEC 61162-2 Ed 1.0 IEC 61162-3 2008 Ed 1.2
Environmental standard	IEC 60945 Ed 4.0
GNSS performance standard	IEC 61108-1 Ed 2.0 IEC 61108-2 Ed 1.0
Product safety	IEC 60945 Ed 4.0

VHF Transceiver

Transmitter	1
Receiver	3
Frequency	156.025MHz to 162.025MHz
Output power	1W or 12.5W (automatic)
Channel bandwidth	25kHz
Channel step	25kHz
Modulation modes	GMSK-TDMA
Bit rate	9600bits/sec
Receiver sensitivity	-107dBm @ 20% PER

GNSS Receiver and Antenna

Channels	72
GNSS systems	Support parallel dual mode operation from GPS and GLONASS
IEC61108-1 Compliant	
IEC61108-2	Compliant
GNSS antenna	Supplied

User Interface

5" 800 x 480 full colour LCD display
Rotary encoder for selection and entry
Four menu keys and four direction keys
Micro SD card for software updates and charts

Environmental

Waterproof	IPx6 & IPx7 rated for water ingress
IEC 60945	'Protected' category
Operating temperature	-15°C to +55°C

What's In The Box

