

ONWA[®]

MARINE ELECTRONICS

MODEL

KFISH-7

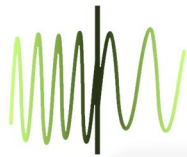
7-inch Dual-frequency
Fish Finder



NEW FEATURE!



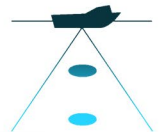
SEABED HARDNESS
Displayed



MULTIPLE DISPLAY
(Frequency)



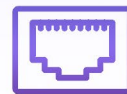
Auto Range & Gain



Time Variable Gain



Optional
HDMI FEATURE



Optional
ETHERNET PORT

NMEA0183
NMEA Interface

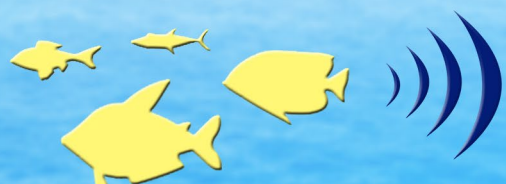
50 kHz and 200 kHz
Dual Frequency

600 W
Transducer

FISH SIZE CALCULATOR



SONAR SOUND

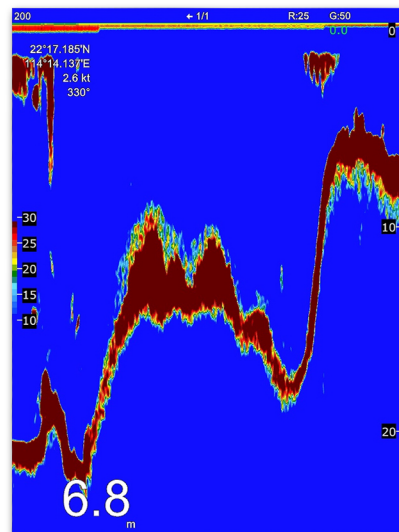


➤ BUILT-IN HD FISH FINDER TECHNOLOGY

*Transducer required

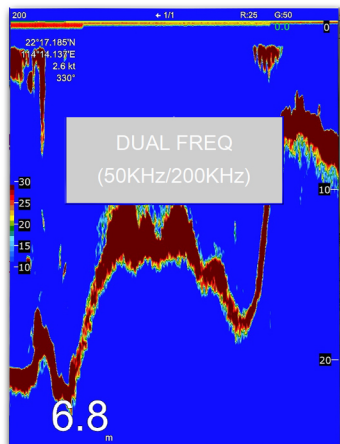
- Applies the most advanced Digital Fish Finder Technology
- Dual Frequency: 50 and 200kHz (alternately transmitted)
- Automatic Range and Gain adjustment depending on usage (Cruising or Fishing)

> Excellent Sea-bed Discrimination and easily identify fishes and school of fish
> Exact depth to where the school of fish is shown for ease of fishing



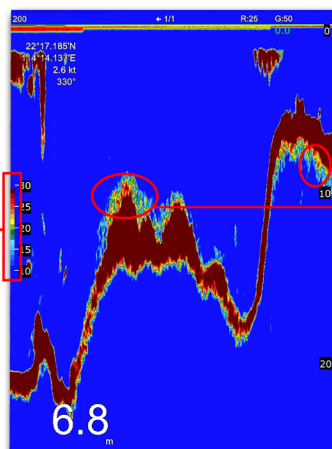
Display Modes

> Selection of Display Modes depending on your need (50 KHz, 200KHz, Dual, 50KHz/Zoom and 200KHz/Zoom)



16 Colors according to intensity

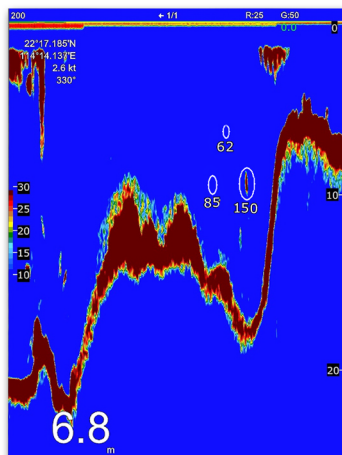
Color bar shows 16 colors



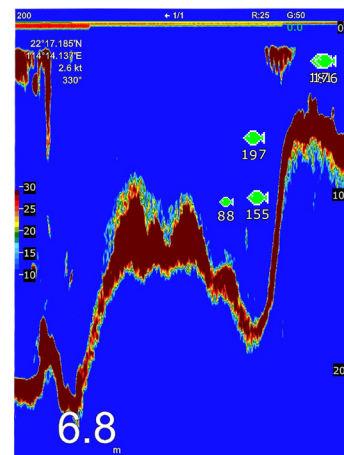
Can distinguish different strength of echoes by colors

Fish Marks

> Calculates and Displays the size of fish or school of fish automatically. Fish or School of fishes can be represented by circle or Fish Marks



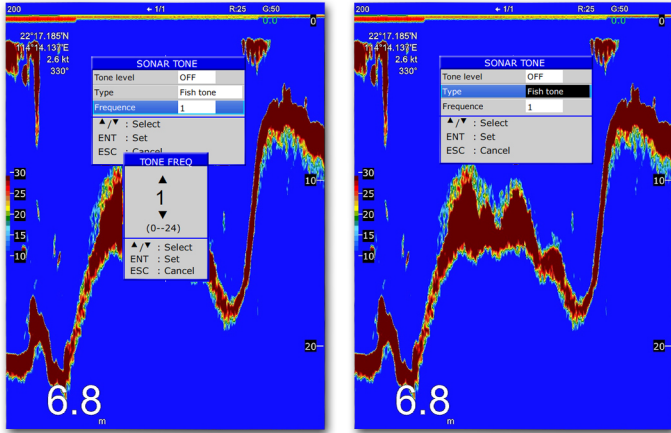
Fishes or school of fishes are represented by circles



Fishes or school of fishes are represented with Fish Mark

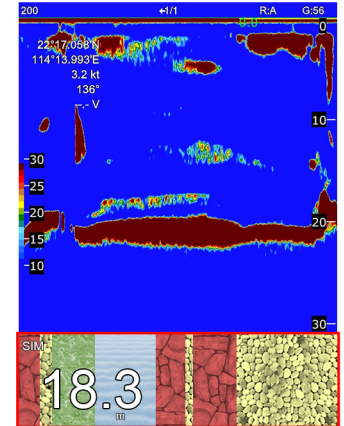
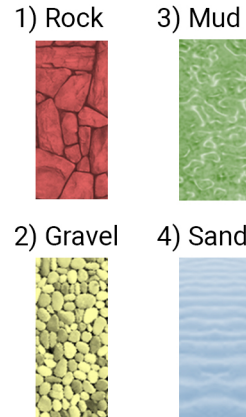
Sonar Sounds

> Sounds when fish or object is seen beneath our boat



Seabed Hardness (NEW FEATURE)

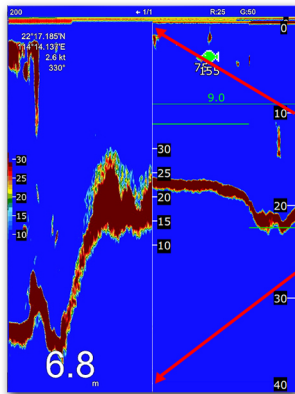
> This feature shows the user what type of sea bottom it is under the boat
> The representation is much easier to assess from a user's point of view, through the presentation as below:



← Seabed Hardness Feature

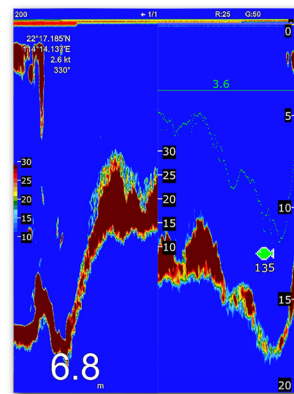
Zoom Modes

> Marker Zoom, Bottom Lock Zoom, & Bottom Zoom

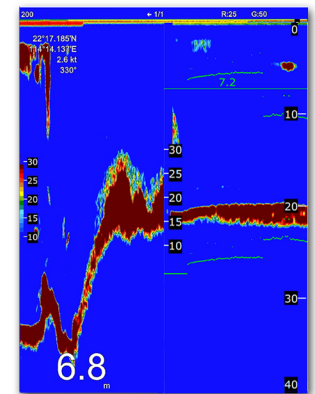


MARKER ZOOM

The marker area is zoomed and displayed on the left side screen



BOTTOM LOCK ZOOM



BOTTOM ZOOM

► FISH, BOTTOM, AND TEMPERATURE ALARMS

*Temperature sensor required for Temperature Alarm

Fish Alarm:

Alarms when fish is seen at set range

Bottom Alarm:

Alarms when the set bottom range is reached

Temperature Alarm:

Used to warn the user when temperature reaches set temperature range

OPTIONAL ACCESSORIES

KTD-520_TM
Transom Mount
Transducer
600W



Bronze Transducer
Thru-hull Transducer
600W



Plastic Transducer
Thru-hull Transducer
600W



KTS-10K_TM
Transom Mount
Temperature Probe



KTS-10K_TH
Thru-Hull
Temperature Probe



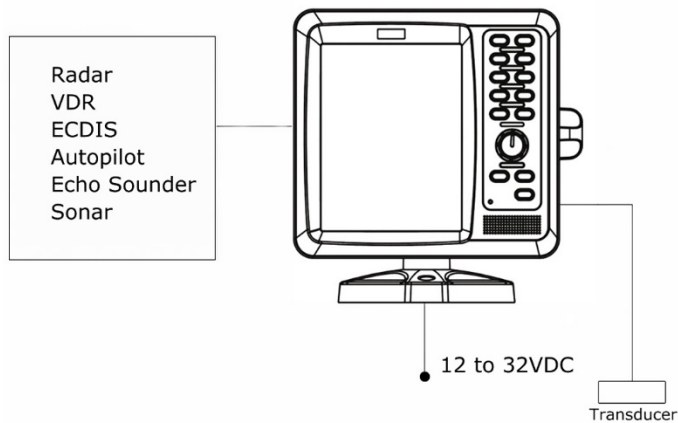
GENERAL

Display	7-inch TFT LCD
Echo Color	16 colors (including background color) according to echo intensity. The background color is selectable from blue, light blue, white and black
Basic Range	Meters 5/10/20/40/80/150/200/300/600/1000
<i>*The basic ranges can be changed on the system menu</i>	
Range Shift	Feet 15/30/60/120/200/400/600/1000/2000/3000
	Fathoms 3/5/10/20/40/80/100/150/300/600
	Passi/Braza 3/5/10/20/40/80/100/150/300/600
Zoom Range	Up to 1000 meters (3000 feet, 600 fathoms, 600 Passi/Braza)
Bottom Lock Expansion Range	Times 2, 3, 4 and 6 ranges
	5/10/20 meters
	10/20/40 feet
	2/5/10 fathoms
	2/5/10 Passi/Braza
Auto Mode	Automatic adjustment of range and gain
Display Mode	High Frequency (200K), Low Frequency (50K), Dual (200K and 50K 1/2 display on each), Zoom (200K and 50K zoom) and A-scope Display
Zoom Display	Marker Zoom, Bottom Zoom and Bottom-lock Expansion
Display Advance Speed	Lines/TX: Freeze, 1/8, 1/4, 1/2, 1/1, 2/1, 4/1
TX Frequency	50 kHz and 200kHz (alternately transmitted)
Power Output	600W RMS
Pulse-Length/TX Rate	

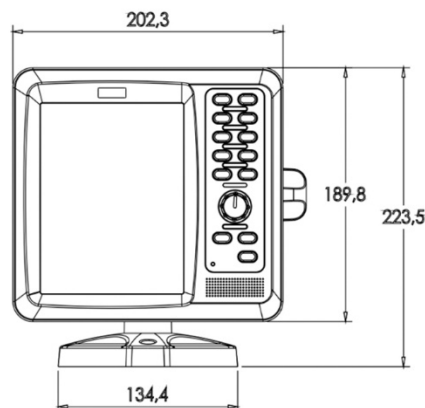
Display End Depth (m)	5	10	20	40	80	150	200	300	600	1000
Pulse Length 200K (µs)	120	220	320	520	920	1020	1020	1020	1020	1020
Pulse Length 50K (µs)	170	270	370	570	970	1070	1070	1070	1070	1070
TX Rate (pulse/min)	2000	1333	706	353	171	98	75	52	29	17
TX period (millisecond)	30	45	85	170	350	610	800	1150	2070	3550

Interference Rejecter	Rejects unwanted signals by comparing last and present echoes in strength
Alarm	Fish and Bottom alarms, Temperature alarm (sensor required)

INTERCONNECTION DIAGRAM



DIMENSIONS (DISPLAY UNIT)



POWER SUPPLY

12-24 VDC (-10%,+30%): 1.0-0.6A

NMEA SENTENCE SUPPORTED

INPUT:
RMC, VTG, HEV

OUTPUT:
SDDBS, SDDBT, SDDPT,
POWAB /*only hardness output ONWA mode*/
SDSBH /*only hardness output ONWA mode*/
PHDX /*only hardness output HONDEX mode*/
PKODS /*only hardness output KODEN mode*/

OTHER OPTIONS

HDMI, Ethernet port
(Please specify when ordering)

ENVIRONMENTAL CONDITIONS

Ambient Temperature
Relative Humidity
Vibration

0°C to +50°C
85% at 40°C
± 1mm ±10%, 2(5) to 13.2 Hz,
Maximum Acceleration 7m/s²,
13.2 to 100 Hz
Display Unit (front panel): IPX7

EQUIPMENT LIST

Display unit
Quick manual
Transducer (Specify when ordering)
Mounting Brackets
Standard accessories pack

OPTIONAL ACCESSORIES

Transom Mount or Thru-Hull Transducer
Transom Mount or Thru-Hull Temperature Probe



NMM40-50/200T
Thru-Hull Mount
Transducer (Bronze)
with temperature
sensor



NBM40-50/200T
Thru-Hull Mount
Transducer (Plastic)
with temperature
sensor



KTD-520
Transom Mount
with temperature
sensor



KTS-10K_TM
Transom Mount
Temperature Probe



KTS-10K_TH
Thru-Hull
Temperature Probe

